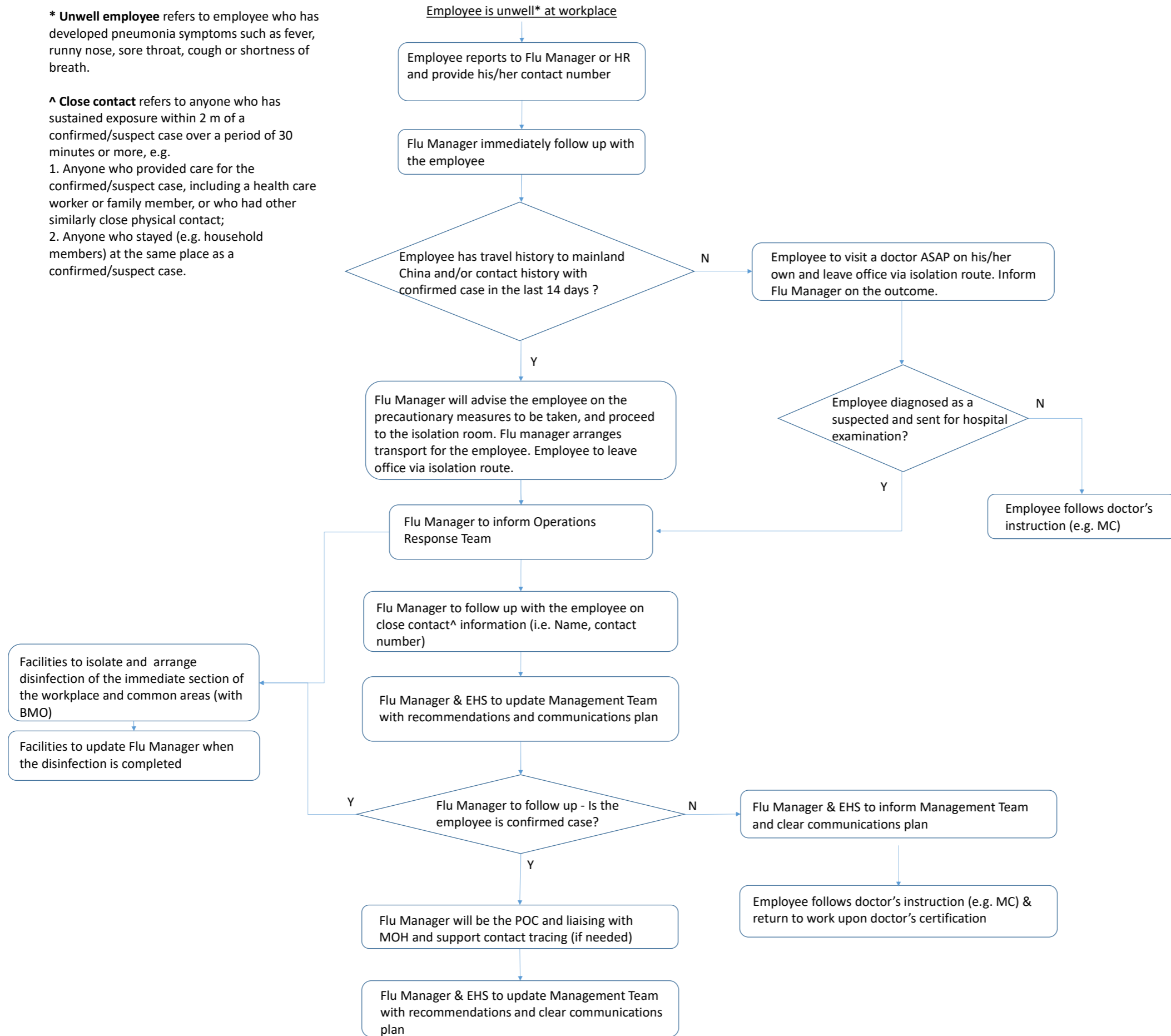


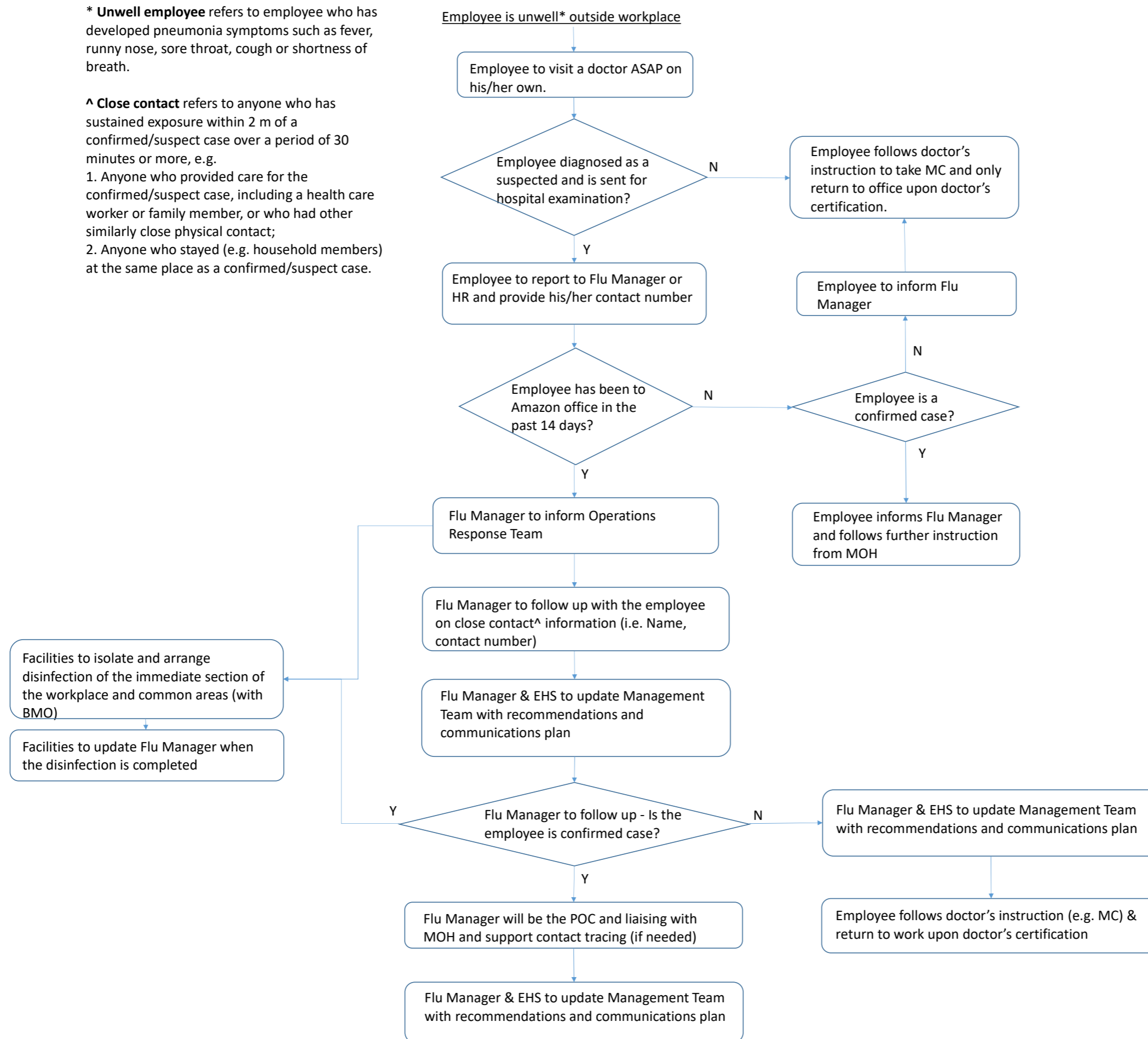
\* **Unwell employee** refers to employee who has developed pneumonia symptoms such as fever, runny nose, sore throat, cough or shortness of breath.

^ **Close contact** refers to anyone who has sustained exposure within 2 m of a confirmed/suspect case over a period of 30 minutes or more, e.g.  
 1. Anyone who provided care for the confirmed/suspect case, including a health care worker or family member, or who had other similarly close physical contact;  
 2. Anyone who stayed (e.g. household members) at the same place as a confirmed/suspect case.



\* **Unwell employee** refers to employee who has developed pneumonia symptoms such as fever, runny nose, sore throat, cough or shortness of breath.

^ **Close contact** refers to anyone who has sustained exposure within 2 m of a confirmed/suspect case over a period of 30 minutes or more, e.g.  
 1. Anyone who provided care for the confirmed/suspect case, including a health care worker or family member, or who had other similarly close physical contact;  
 2. Anyone who stayed (e.g. household members) at the same place as a confirmed/suspect case.



\* **Unwell visitor** refers to visitor who has developed pneumonia symptoms such as fever, runny nose, sore throat, cough or shortness of breath.

^ **Close contact** refers to anyone who has sustained exposure within 2 m of a confirmed/suspect case over a period of 30 minutes or more, e.g.  
 1. Anyone who provided care for the confirmed/suspect case, including a health care worker or family member, or who had other similarly close physical contact;  
 2. Anyone who stayed (e.g. household members) at the same place as a confirmed/suspect case.

